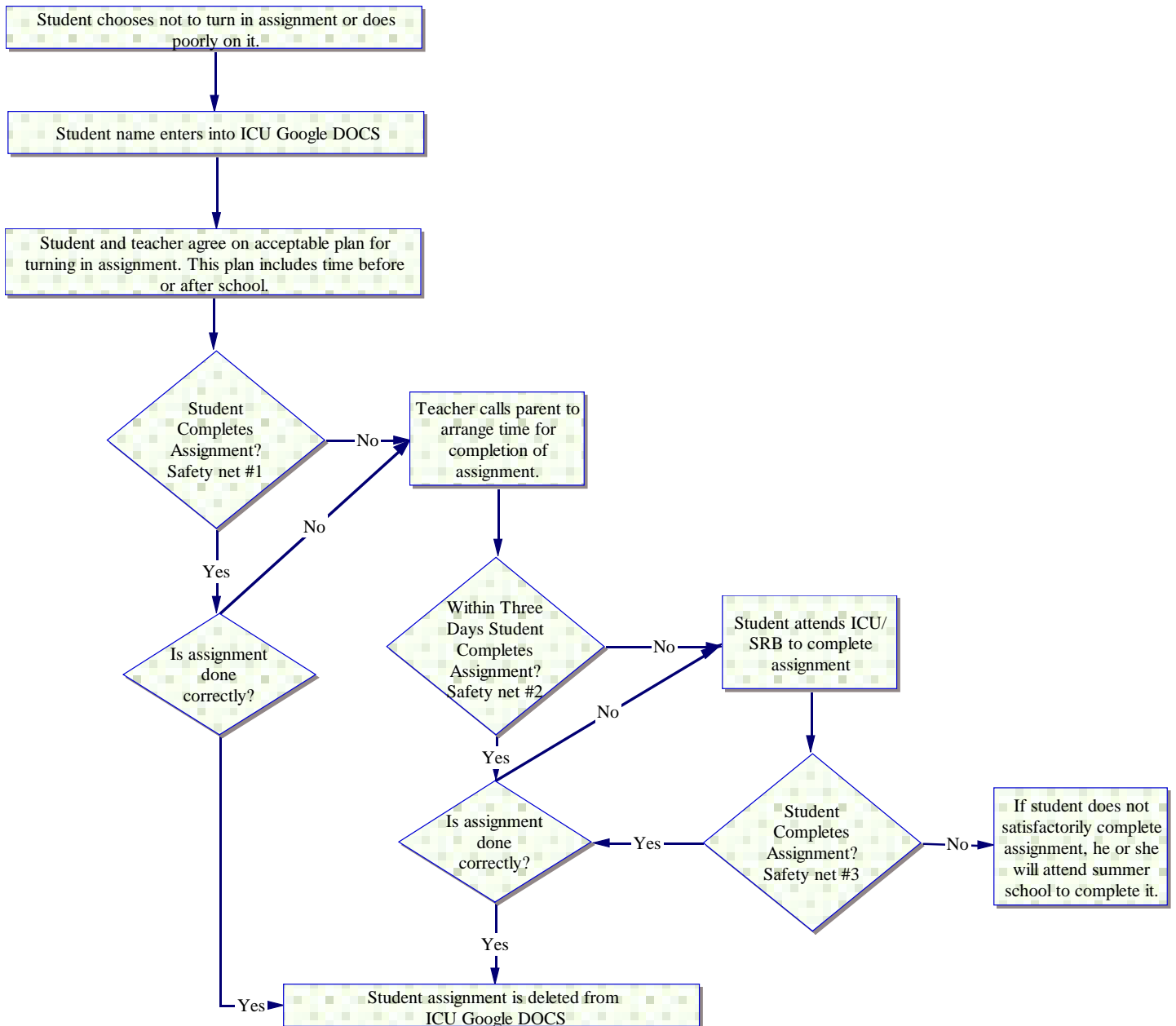


ICU Path to Success



ICU Path to Success

Student chooses not to turn in assignment or does poorly on it.

I. Student name enters into ICU Google DOCS

A. Student and teacher agree on acceptable plan for turning in assignment. This plan includes time before or after school.

1. Student Completes Assignment?

Safety net #1

- a. Teacher calls parent to arrange time for completion of assignment.**
 - (1) Within Three Days Student Completes Assignment?**
 - Safety net #2**
 - (a) Student attends ICU/SRB to complete assignment**
 - i) Student Completes Assignment?**
 - Safety net #3**
 - (1) If student does not satisfactorily complete assignment, he or she will attend summer school to complete it.**
 - (b) Is assignment done correctly?**
 - i) Student assignment is deleted from ICU Google DOCS**
- b. Is assignment done correctly?**